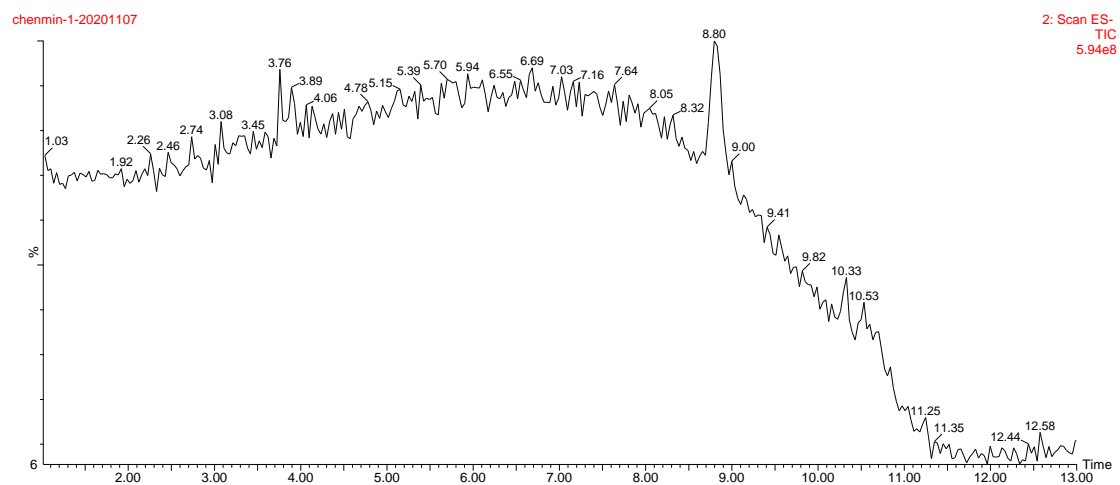
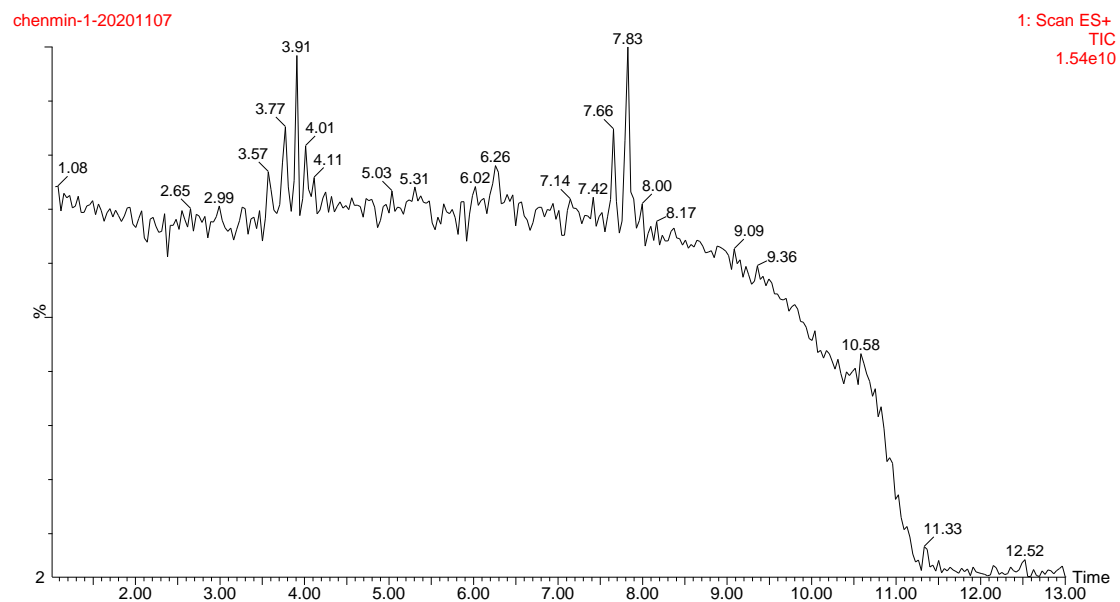


色谱条件

UPLC-MS

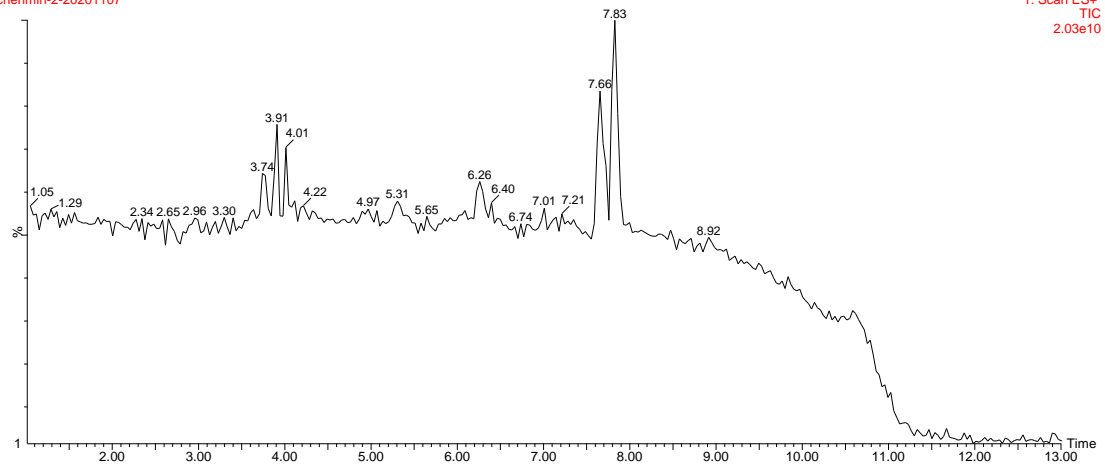
0-10min 5-99 乙腈, 10-13min 99 乙, 腈 0.4ml/min

川木香总提取物 LC MS 总离子流图(上: 正离子模式; 下: 负离子模式)

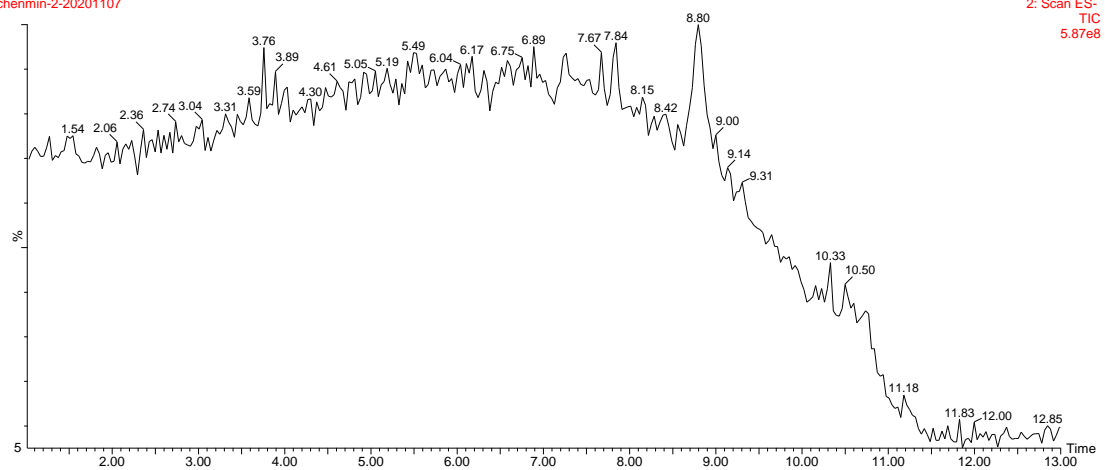


川木香石油醚部位 LC MS 总离子流图(上：正离子模式；下：负离子模式)

chenmin-2-20201107

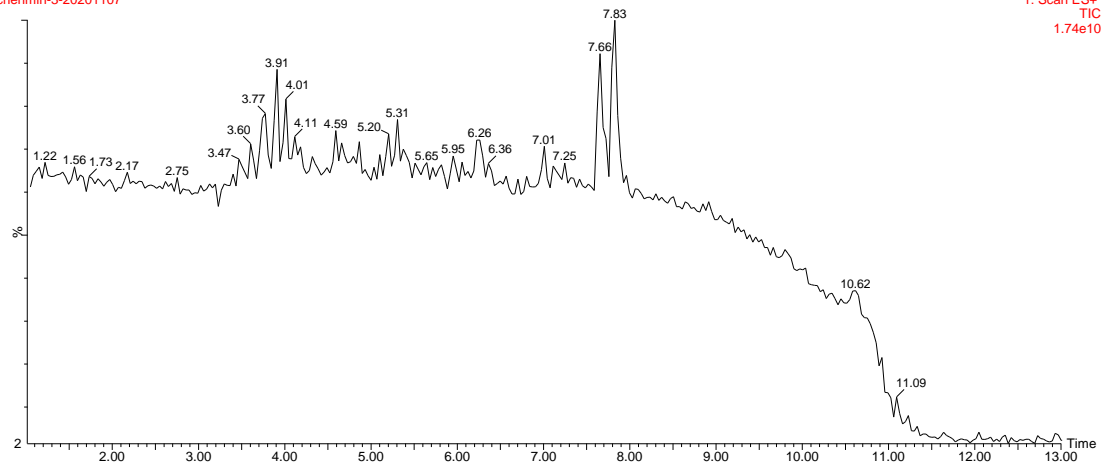


chenmin-2-20201107

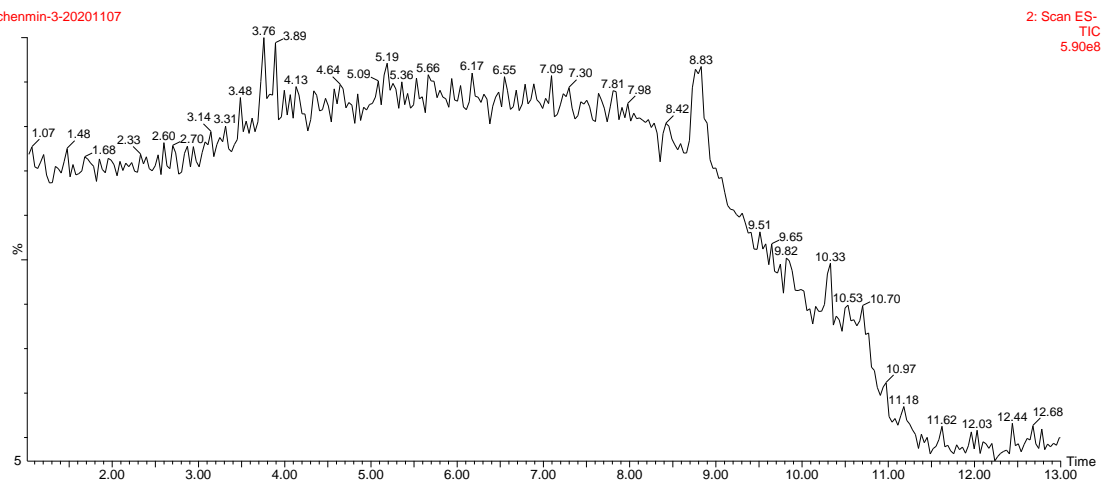


川木香乙酸乙酯部位 LC MS 总离子流图(上: 正离子模式; 下: 负离子模式)

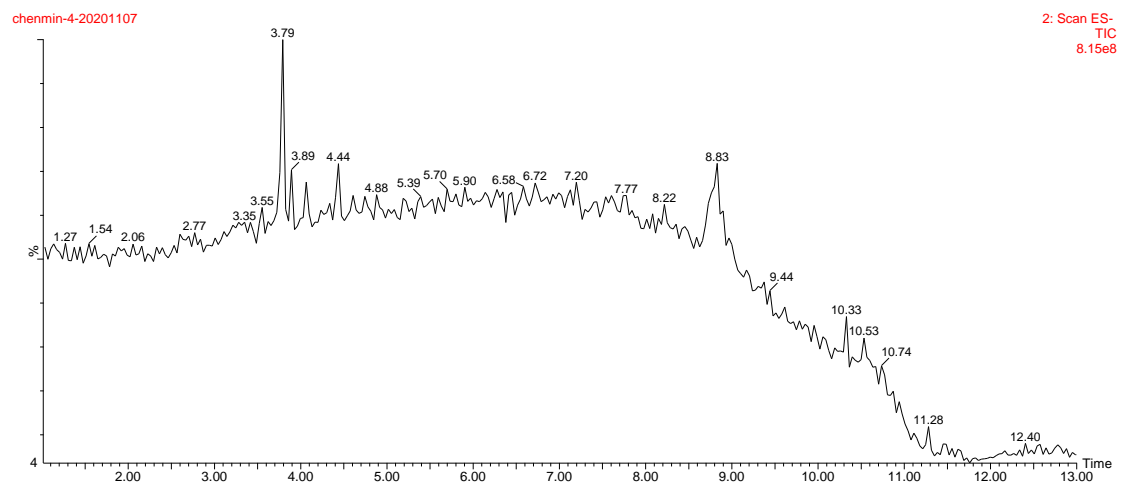
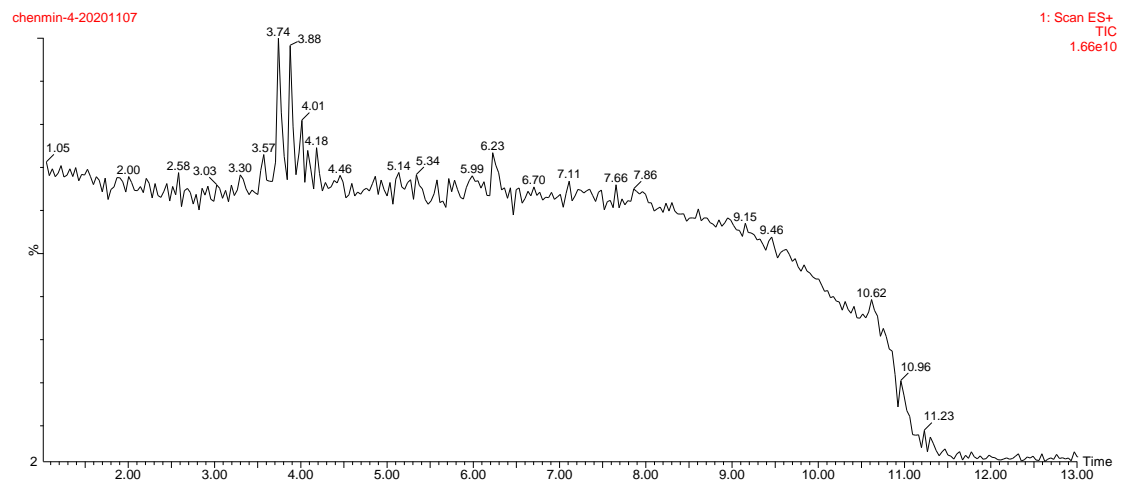
chenmin-3-20201107



chenmin-3-20201107

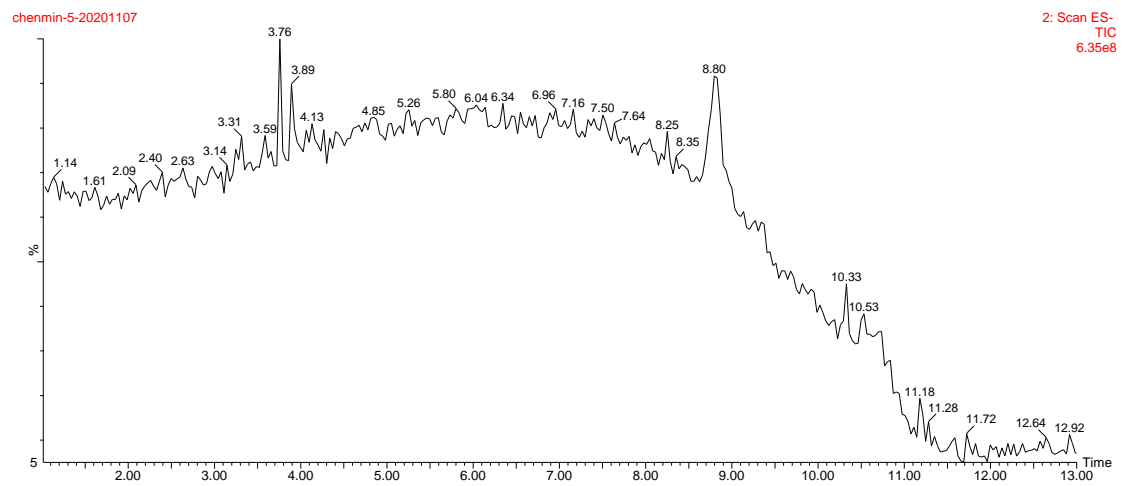
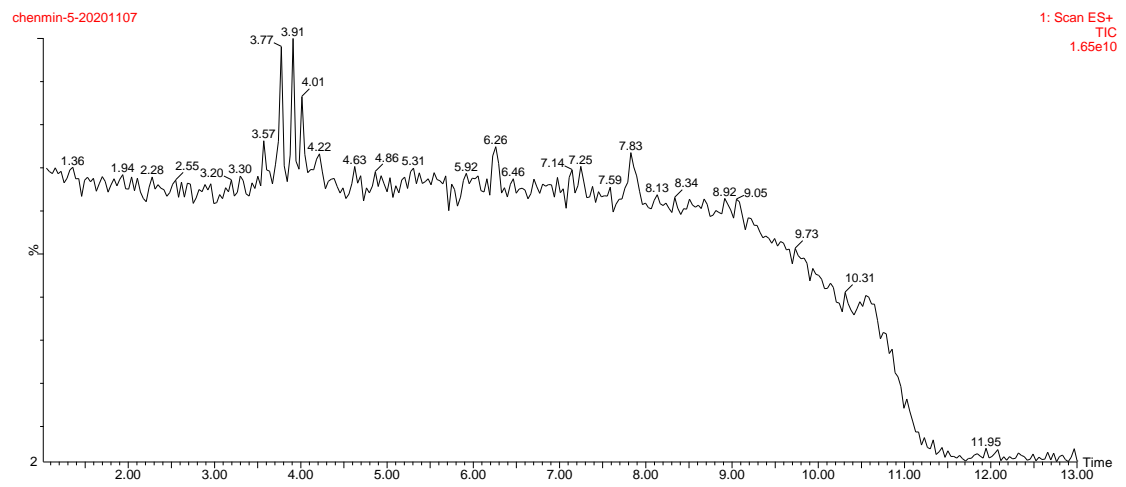


川木香正丁醇部位 LC MS 总离子流图(上: 正离子模式; 下: 负离子模式)



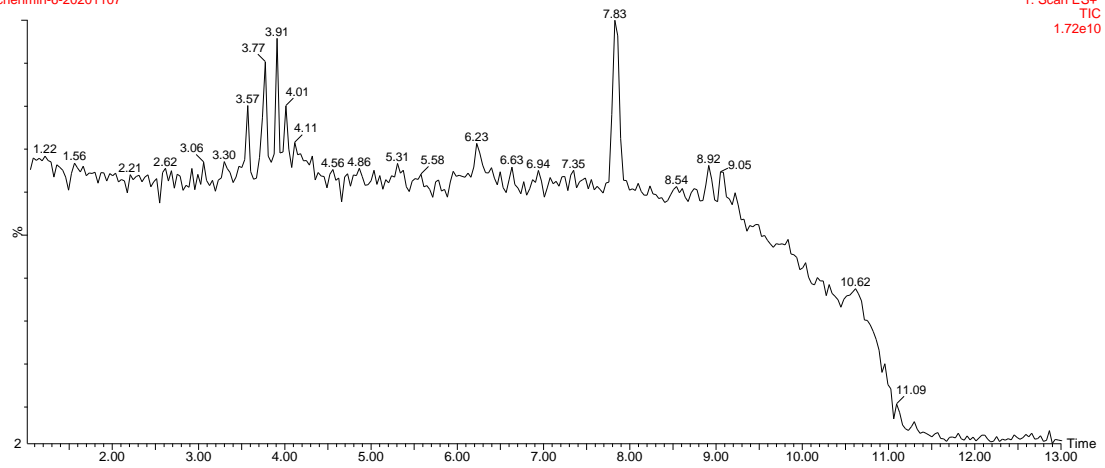
川木香石油醚部位上硅胶柱，石油醚乙酸乙酯梯度洗脱得 1-7 个组分

川木香石油醚部位组分 1 LC MS 总离子流图(上：正离子模式；下：负离子模式)

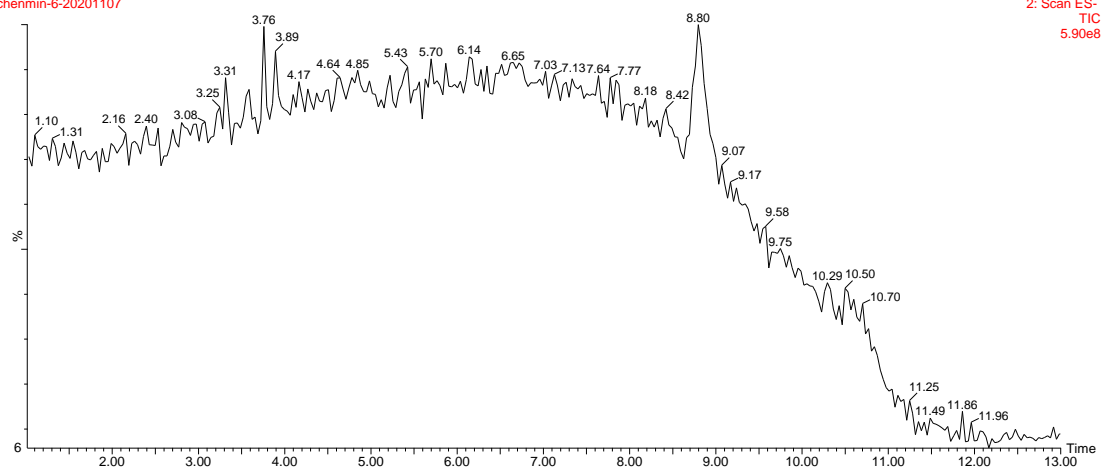


川木香石油醚部位组分 2 LC MS 总离子流图(上: 正离子模式; 下: 负离子模式)

chenmin-6-20201107

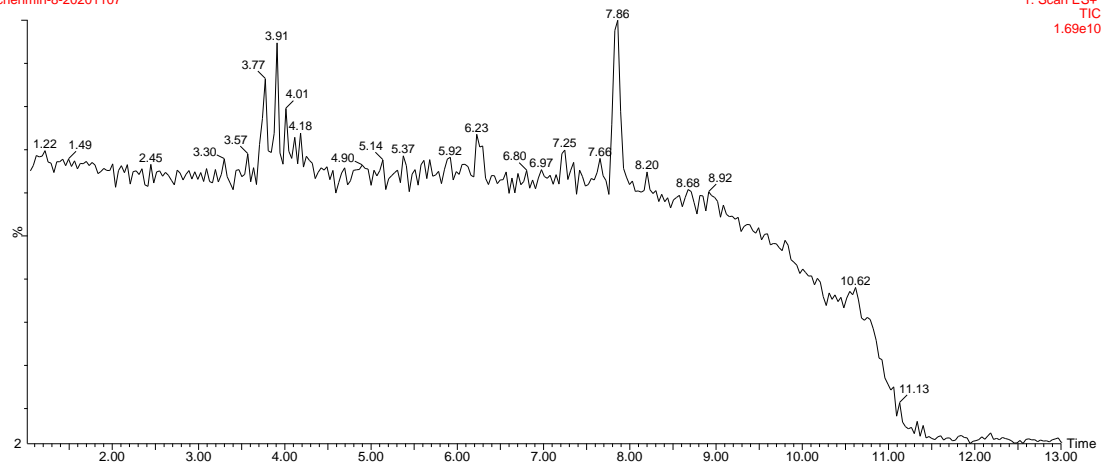


chenmin-6-20201107

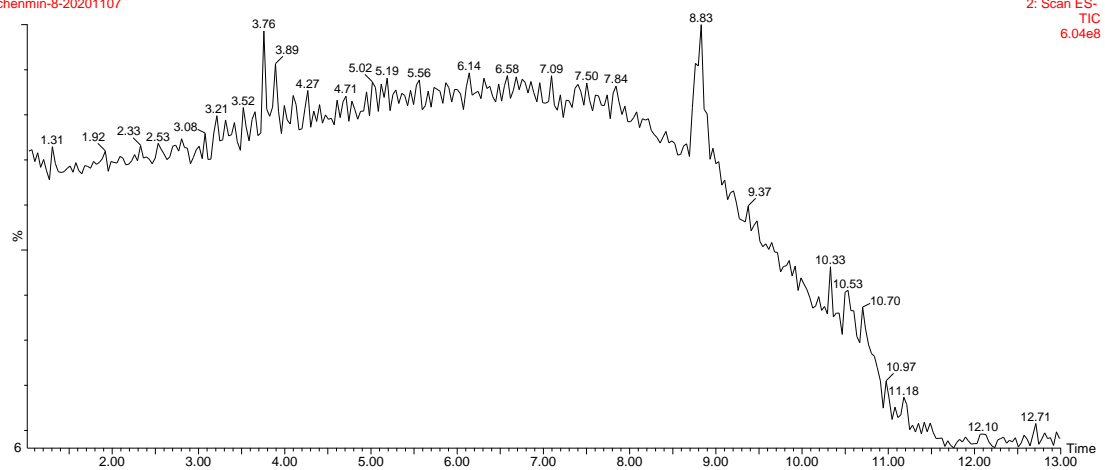


川木香石油醚部位组分 3 LC MS 总离子流图(上: 正离子模式; 下: 负离子模式)

chenmin-8-20201107

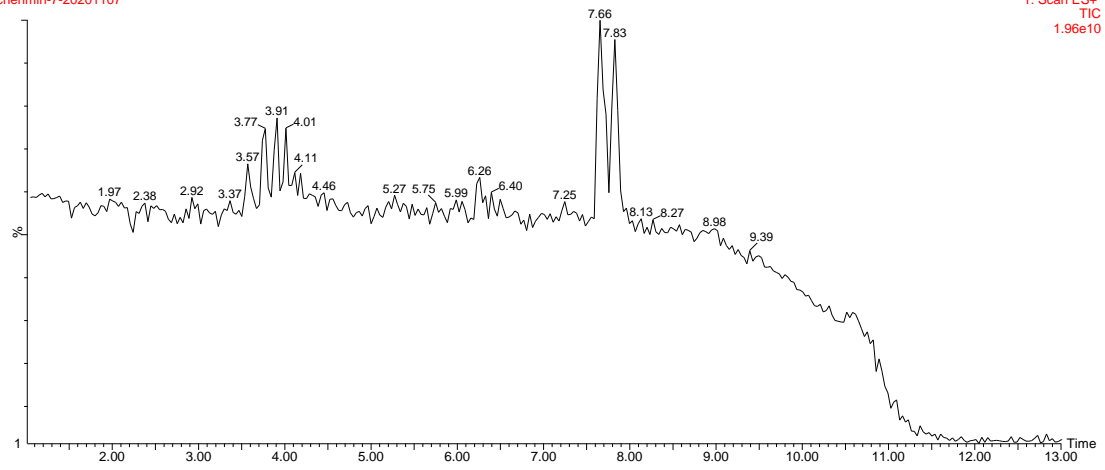


chenmin-8-20201107

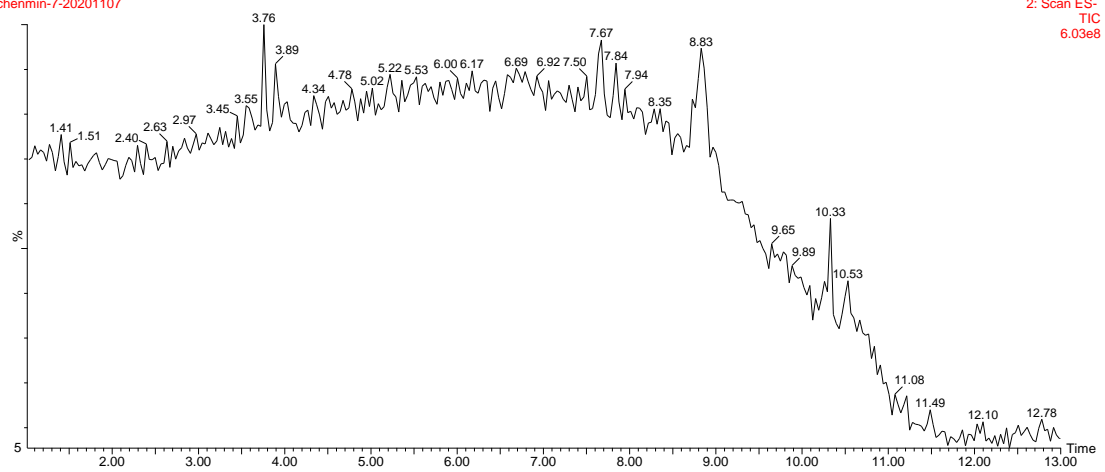


川木香石油醚部位组分 4 LC MS 总离子流图(上：正离子模式；下：负离子模式)

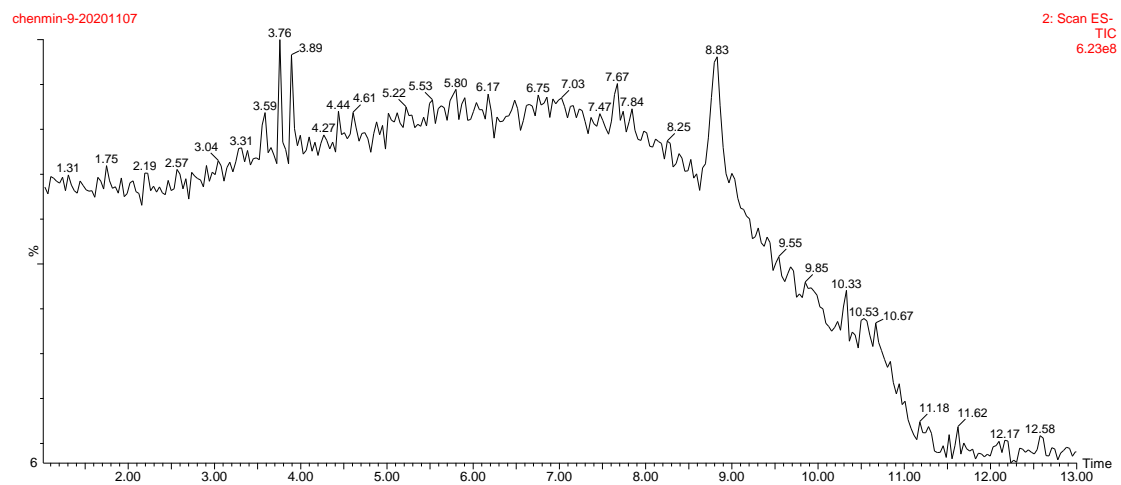
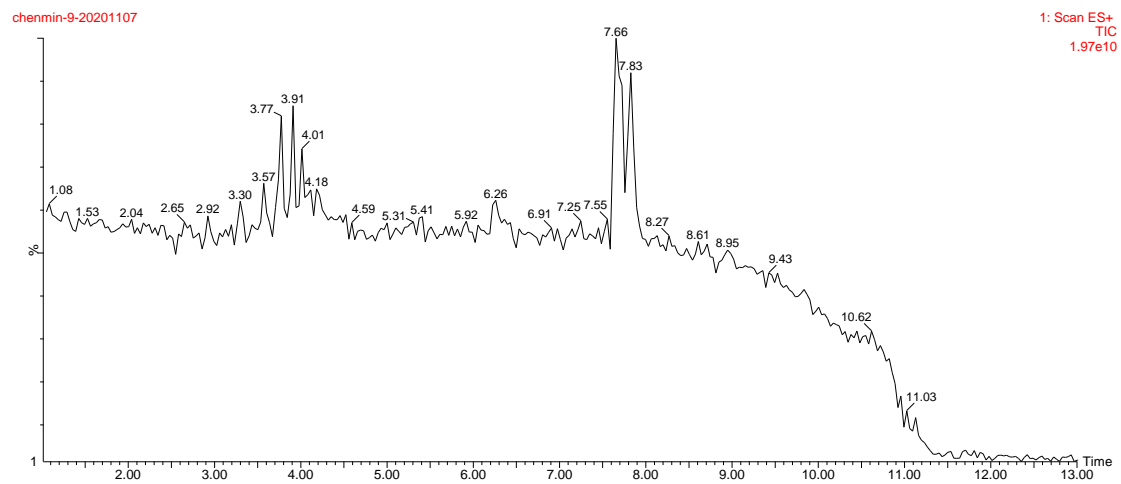
chenmin-7-20201107



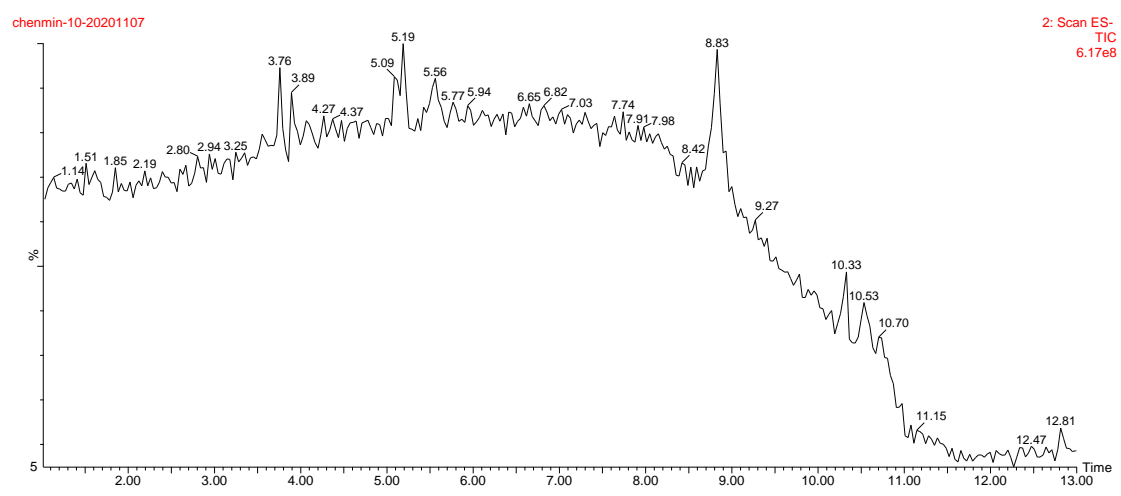
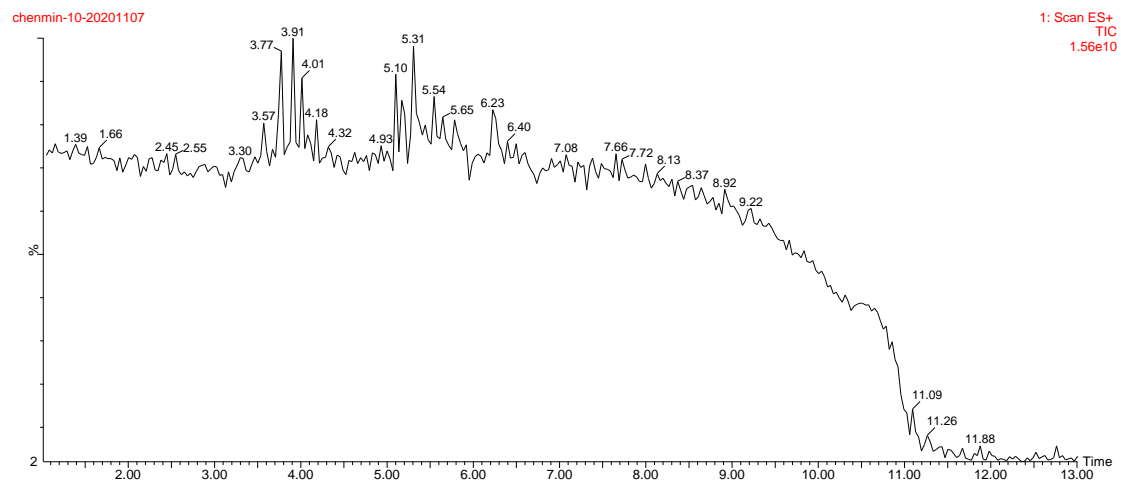
chenmin-7-20201107



川木香石油醚部位组分 5 LC MS 总离子流图(上: 正离子模式; 下: 负离子模式)

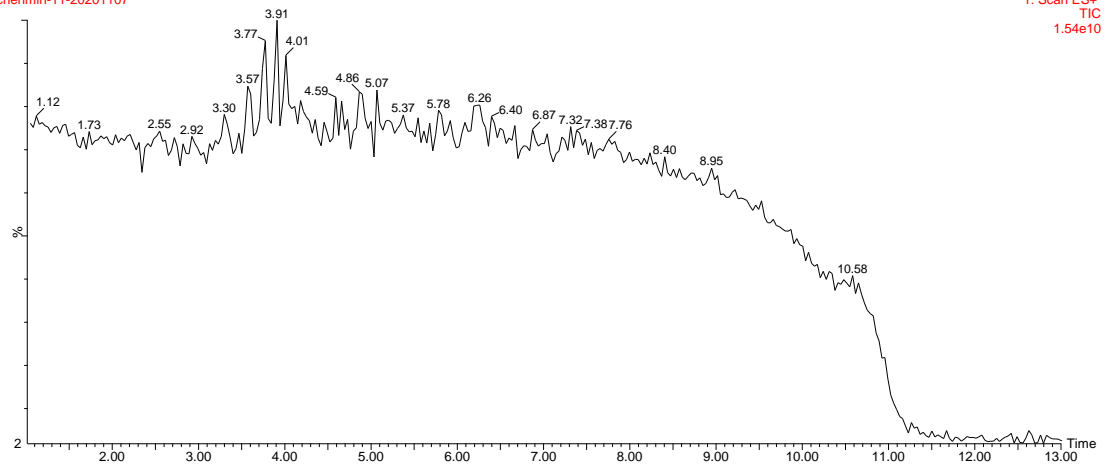


川木香石油醚部位组分 6 LC MS 总离子流图(上: 正离子模式; 下: 负离子模式)

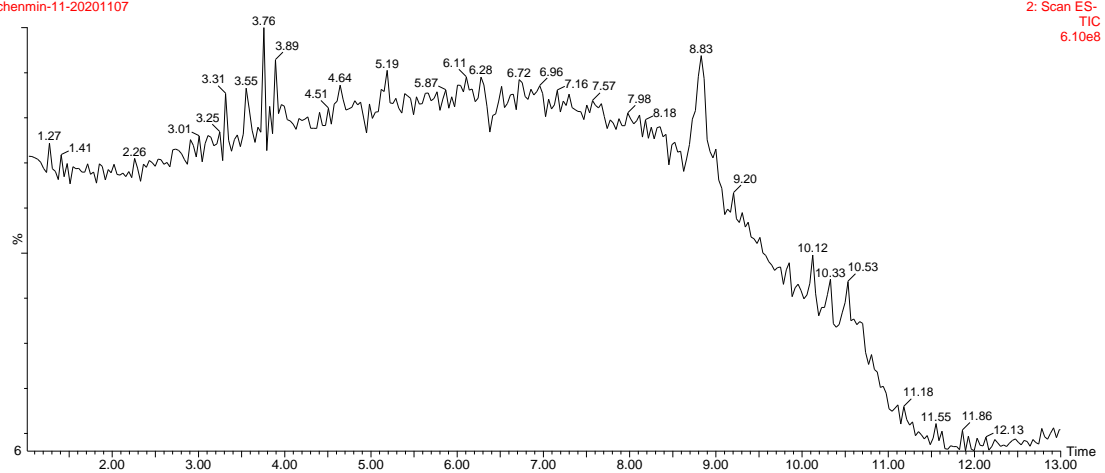


川木香石油醚部位组分 7 总离子流图

chenmin-11-20201107

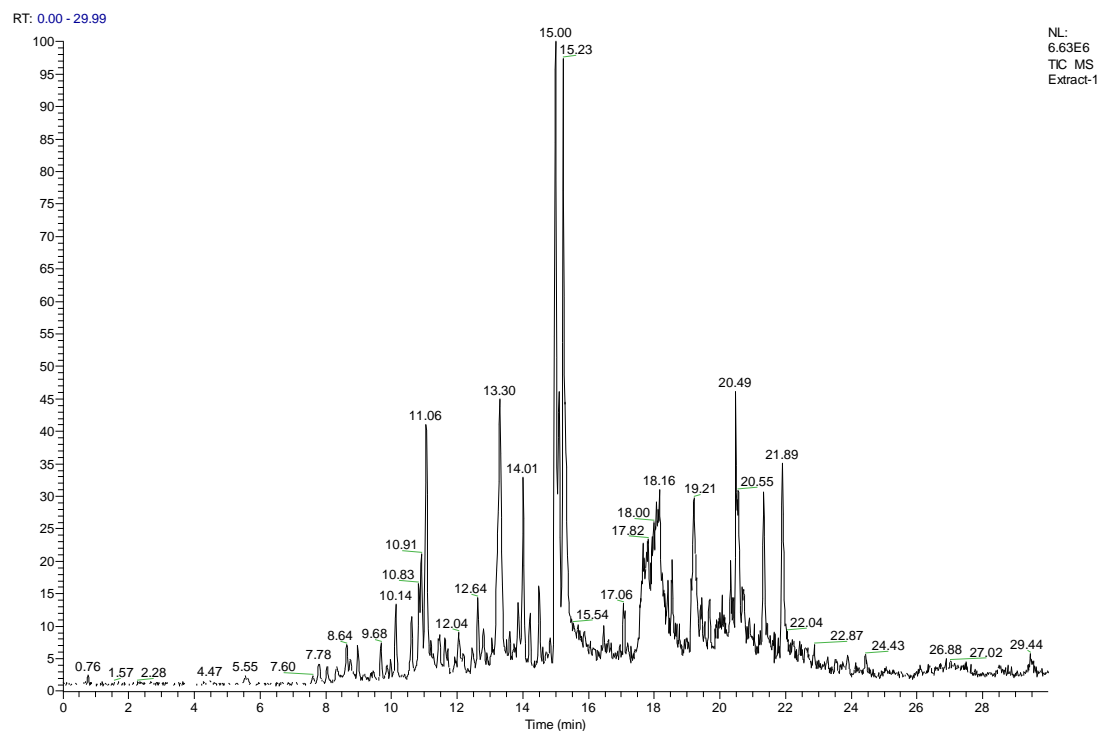


chenmin-11-20201107

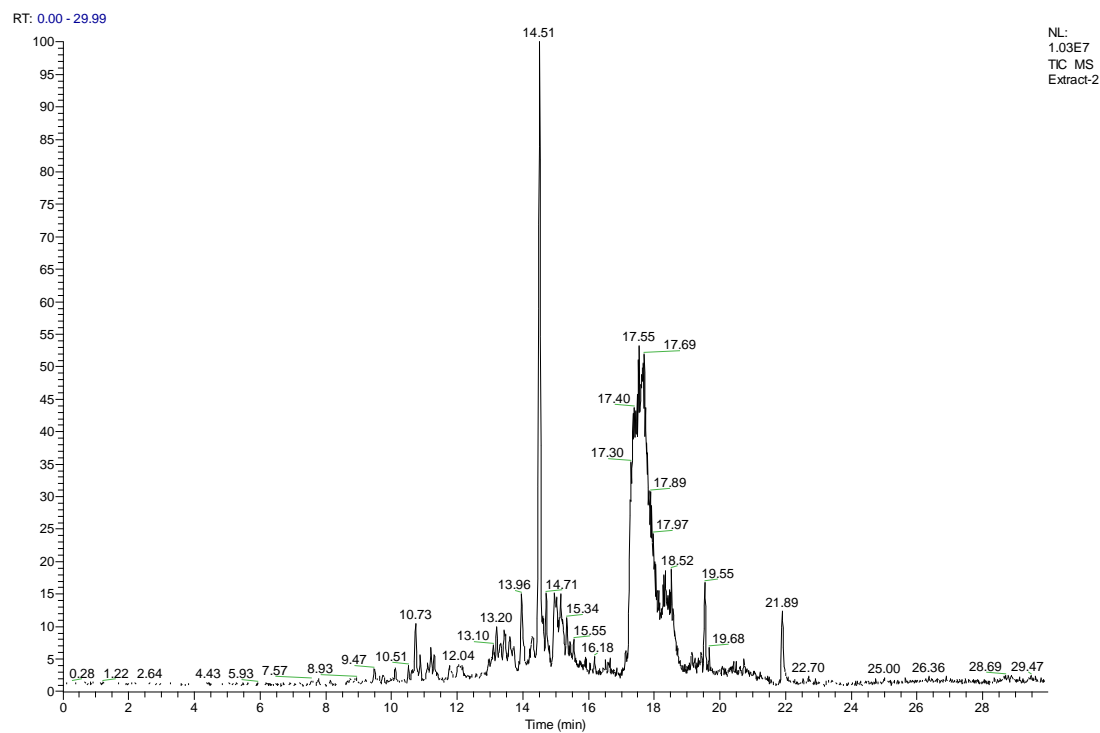


川木香乙酸乙酯部位上 LH-20 柱，得 1-5 个组分

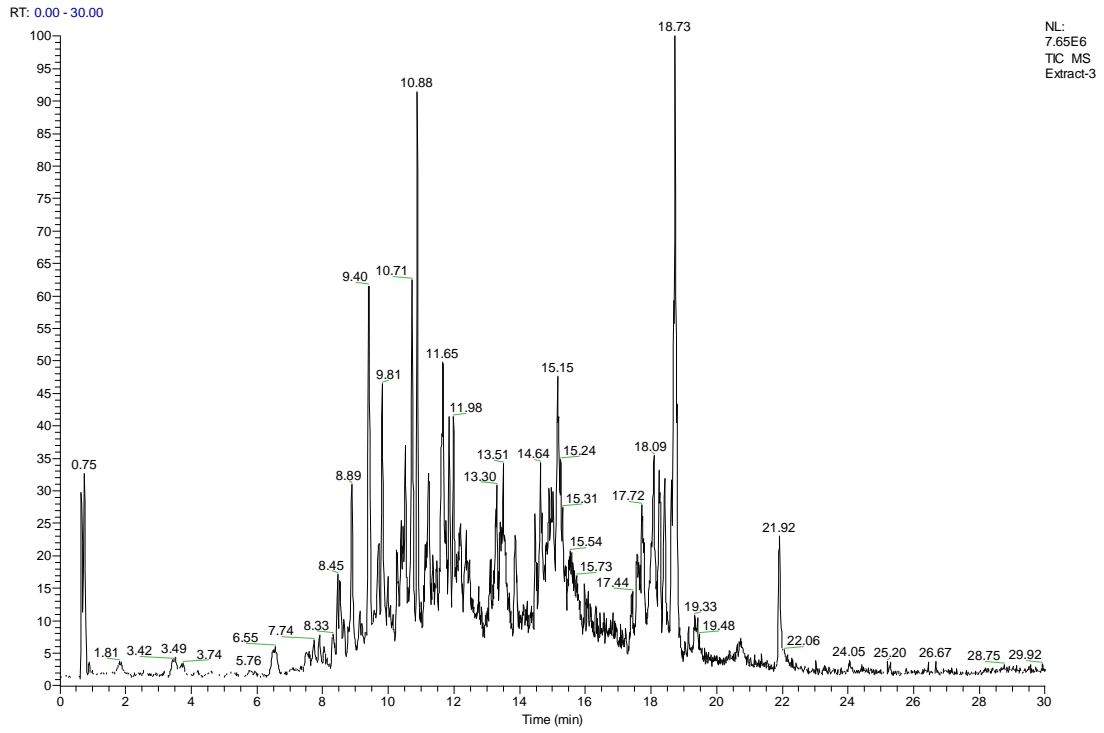
川木香乙酸乙酯部位组分 1 LC MS 总离子流图



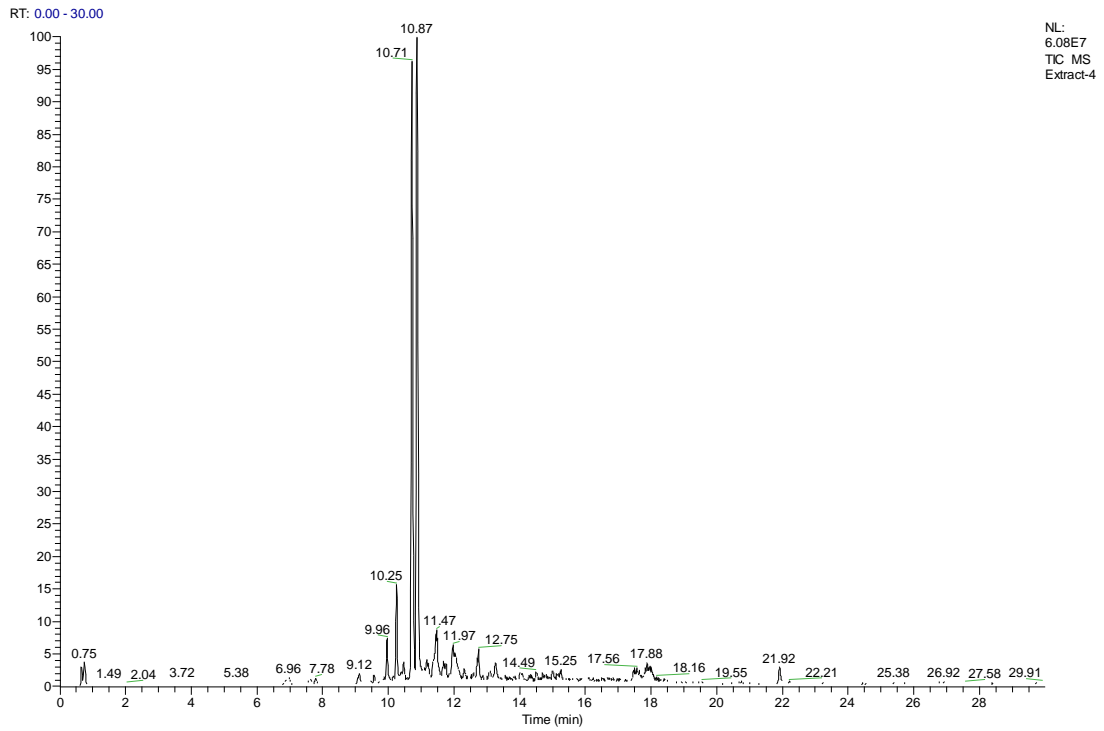
川木香乙酸乙酯部位组分 2 LC MS 总离子流图



川木香乙酸乙酯部位组分 3 LC MS 总离子流图



川木香乙酸乙酯部位组分 4 LC MS 总离子流图



川木香乙酸乙酯部位组分 5 LC MS 总离子流图

RT: 0.00 - 29.99

NL:
4.49E6
TIC MS
Extract-5

